



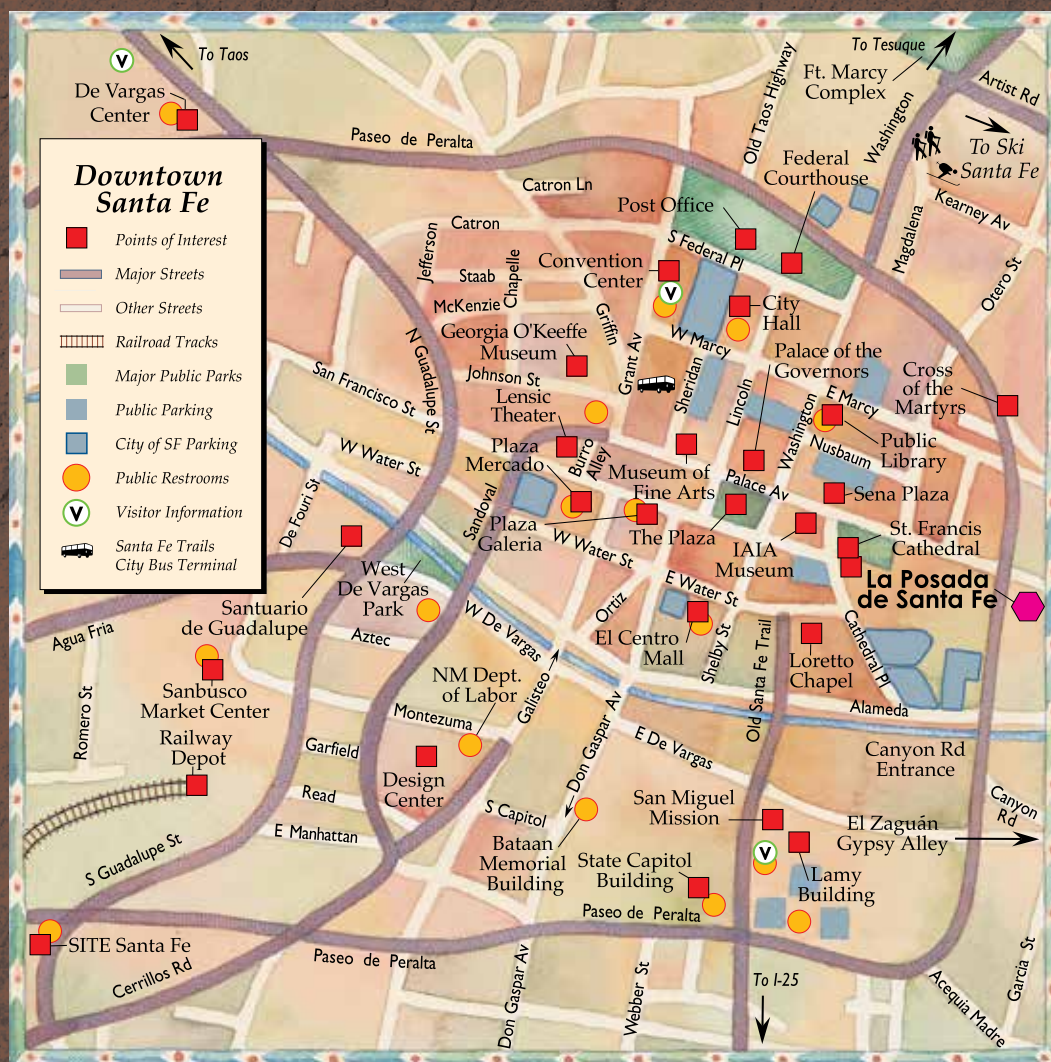
LA POSADA

DE SANTA FE

RESORT & SPA

SANTA FE, NEW MEXICO





IN THE HEART OF SANTA FE

La Posada de Santa Fe Resort & Spa is conveniently located two blocks from Santa Fe's historic Plaza, two blocks from world-renowned Canyon Road and just steps from the city's numerous art galleries, museums, restaurants, cafés and cultural attractions.

Visit La Posada and discover the wonders of Santa Fe right outside your door.



Santa Fe is a one-of-a-kind destination that reflects a unique heritage and an unparalleled Old World-style ambiance. From the 400-year-old adobe walls, to the centuries-old churches, to the hundreds of farolitos that light the streets in winter, Santa Fe is a place where cultural legacies flourish and history comes alive.

Plan your next meeting or celebration at La Posada de Santa Fe Resort & Spa and experience the rich traditions, romantic charm and unsurpassed luxury of Santa Fe, one of the most beautiful cities in the world.

ACCOMMODATIONS

Situated on six beautifully landscaped acres, La Posada de Santa Fe is a magical retreat featuring Pueblo revival architecture, an abundance of Southwestern art and 157 uniquely designed rooms and suites characteristic of the early adobe art colony that originally occupied the site. Each guest room is decorated with traditional viga and latilla ceilings, and many feature kiva fireplaces and shady patios. With its world-class amenities, this AAA Four Diamond Award-winning resort offers exceptional dining, a luxurious spa and salon – rated the 4th top hotel spa in the nation by *USA Today* – fitness center, outdoor pool, hot tub and more – it's no wonder that La Posada is consistently honored as one of the top hotels in the country by readers of *Travel+Leisure* and *Condé Nast Traveler*.

RECREATION

Each year, artists fill the city for the annual Folk Art, Spanish and Indian markets. Santa Fe's renowned entertainment venues welcome superior operas, musical performances and theatrical events. Outdoor adventures include hiking, mountain biking, whitewater rafting and golfing in summer, as well as alpine skiing, cross-country skiing and snowshoeing in winter. And the region's Native American pueblos, historic towns and breathtaking Sangre de Cristo and Jemez Mountains are just a short drive away.

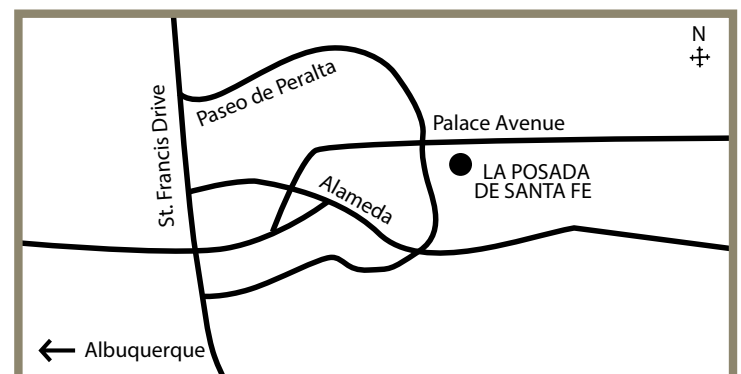
DINING

Guests can savor delectable cuisine at Julia, A Spirited Restaurant & Bar - named after the elegant founder of the historic estate that became La Posada. They can also enjoy a more casual dining experience at The Patio restaurant or sip cocktails and listen to live music at the historic Staab House.

Larger venues include the Montaña Ballroom, which is graced by a roaring fireplace and elegant French doors and the magical Lawn Court gardens, an ideal spot for picture taking, strolling and stargazing. Catering services offering innovative menus infused with Southwestern flavors and influences are tailored to each group's needs.

LOCATION

La Posada is tucked away on a quiet street, just steps from the city's celebrated galleries, museums, shops and restaurants. It is approximately an hour's drive from Albuquerque International Airport, a 20-minute drive from Santa Fe Airport and 90 miles south of Taos.

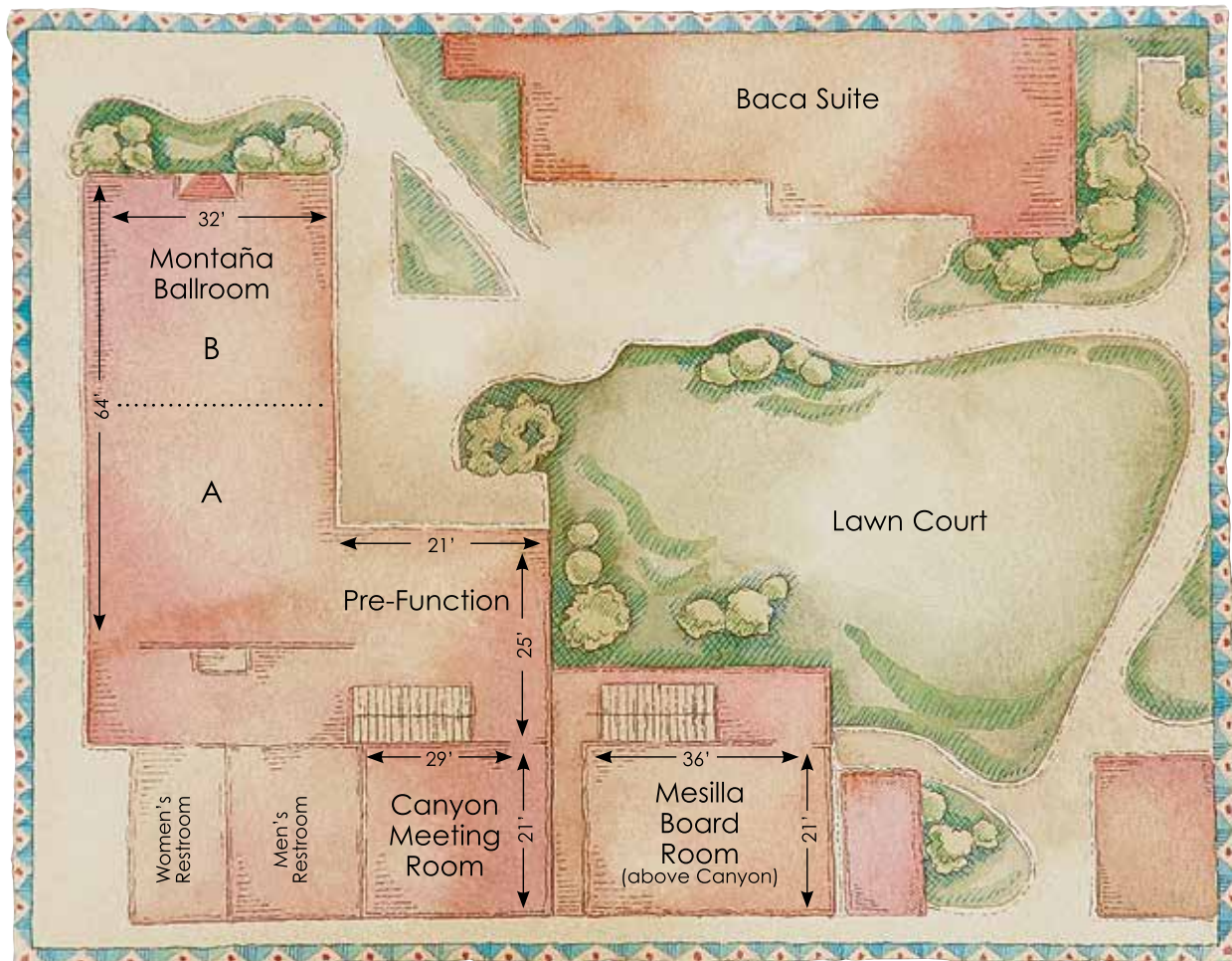


MEETING & BANQUET FACILITIES

With venues such as the Montaña Ballroom, Mesilla Board Room and Canyon Meeting Room, La Posada's 4,000-square-foot conference center offers comfortable settings for groups of up to 300. Smaller meetings and breakout sessions can be held in the charming, 19th-century Rose Room. And guests have full access to the resort's business center and state-of-the-art audio/visual and teleconferencing equipment.

NAME OF ROOM	DIMENSIONS	FEET	THEATER	CLASSROOM	U-SHAPE	BANQUET	RECEPTION
Montaña A & B	32' x 64'	2,048	225	140	60	160	300
Montaña Ballroom A	32' x 32'	1,024	100	60	35	60	150
Montaña Ballroom B	32' x 32'	1,024	100	60	35	50	150
Mesilla Board Room	21' x 36'	756	-	-	-	-	-
Pre-Function Area	21' x 25'	525	-	-	-	-	100
Canyon Meeting Room	21' x 29'	609	60	25	25	50	75
Garden & Patio Area	30' x 35'	1,050	-	-	-	140	150
Rose Room	12' x 16'	192	-	-	-	10	-
Library	16' x 16'	352	40	-	-	40	50
Salon	27' x 13'	324	-	-	-	25	50
Lawn	50' x 38'	1,954	275	-	-	250	300
Baca Suite	58' x 26'	1,080	-	-	-	-	60

MEETING SPACE



MEETING SPACE





LA POSADA
DE SANTA FE
RESORT & SPA

330 East Palace Avenue Santa Fe, NM 87501

505.954.9655

LAPOSADADESANTAFE.COM

